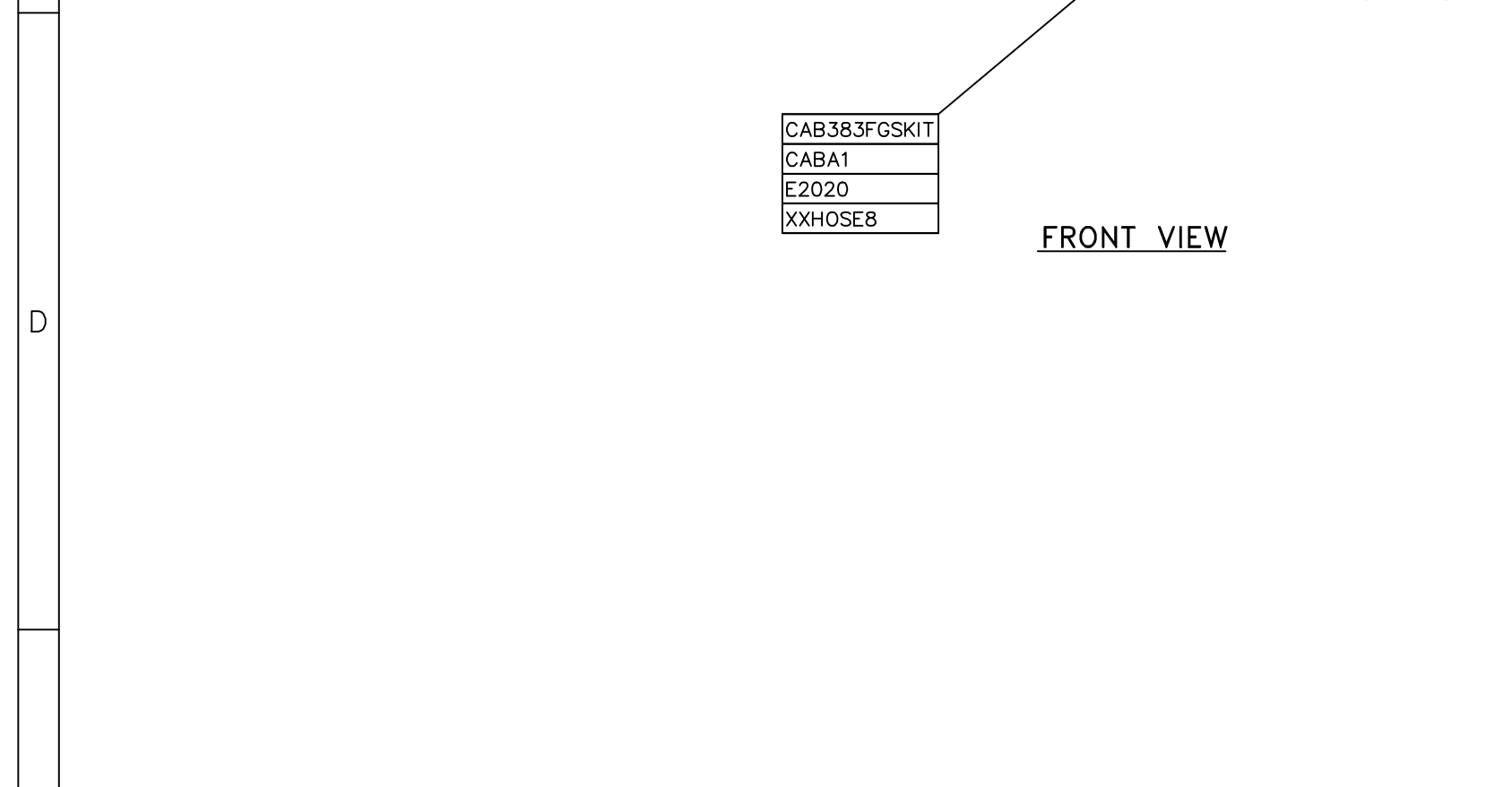
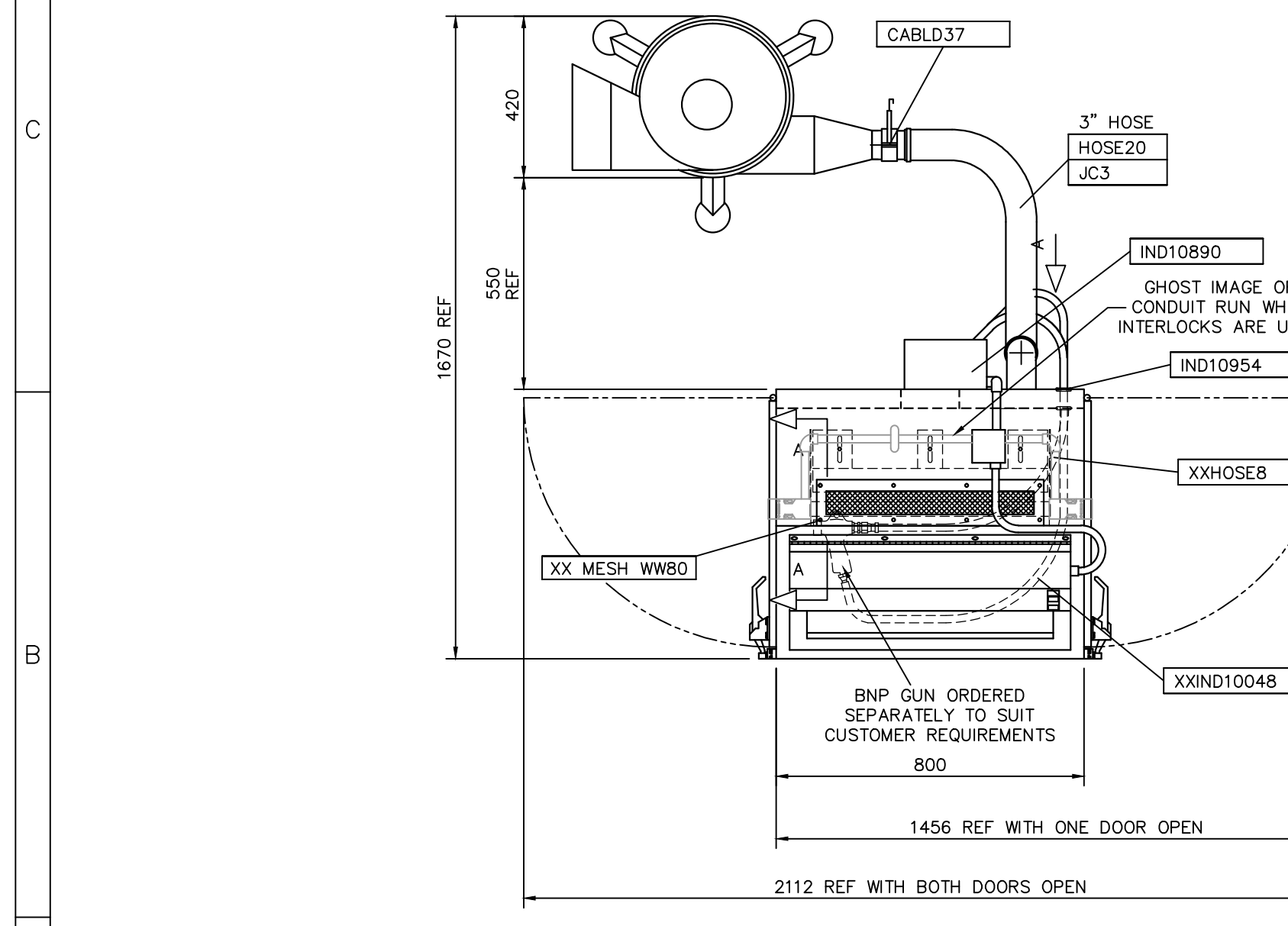


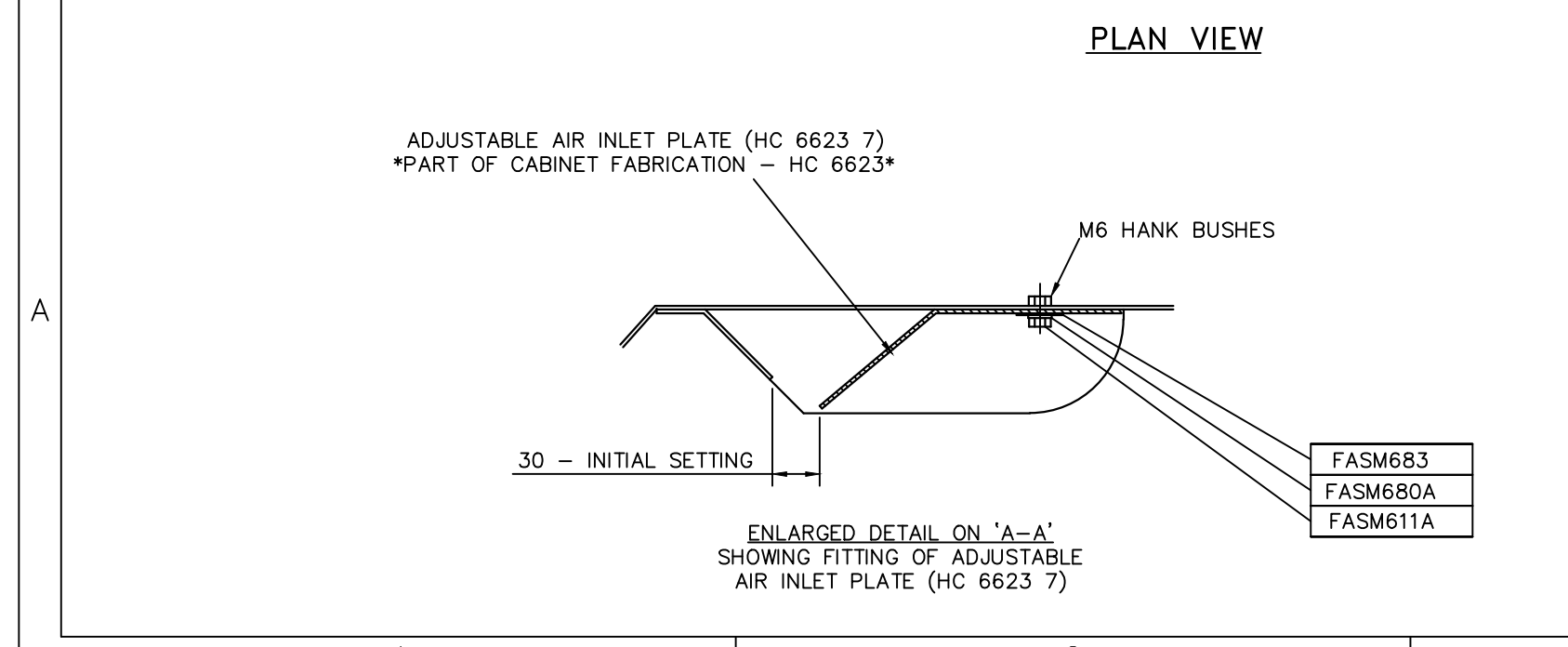
FRONT VIEW



SIDE VIEW



PLAN VIEW



ENLARGED DETAIL ON 'A-A' SHOWING FITTING OF ADJUSTABLE AIR INLET PLATE (HC 6623 7)

ELECTRICAL REQUIREMENTS

FAN MOTOR - 0.55 KW ~ 415 V / 3 PH / 50 Hz - 1.45A FLC
 LIGHT MODULE - 36 W (2 x 18 W) ~ 240 V / 1 PH / 50 Hz
 SOLENOID VALVE ~ 240 V / 1 PH / 50 Hz (OPTIONAL)

AIR REQUIREMENTS

AIR SUPPLY ~ 80 PSI - CONSUMPTION AT 80 PSI
 5/16" JET = 33 CFM
 2mm JET = 10 CFM

PAINT SPECIFICATION

CLEMCO PREP & PAINT SPEC. RAL6003 (SPRUCE GREEN)

REFERENCE DRAWINGS

FOR SUB-BUILD (IND 800SB) SEE HC-5526
 FOR ELECTRICAL DIAGRAM SEE HC-5414 ~ STANDARD
 FOR PNEUMATIC DIAGRAM SEE HC-3118

TECHNICAL SPECIFICATION

1. NOMINAL WORK CHAMBER SIZE = 800(W) x 650(D) x 800(H)
2. MAXIMUM WORKTABLE CAPACITY = 100 KG
3. MINIMUM INTERIOR ILLUMINATION = 500 LUX.
4. BLOW-OFF GUN ~ OPTIONAL SUPPLY
5. AIR REGULATOR/WATER SEPARATOR SUPPLIED AS STANDARD
6. 6 mm THK CLEAR POLISHED GEORGIAN WIRED GLASS TO BS 952 VIEWING WINDOW.
7. SAFETY DOOR INTERLOCKS ~ OPTIONAL SUPPLY

GENERAL NOTES

- 1) MATERIAL: COLD ROLLED MILD STEEL SHEET TO BS 1449 GRADE CR4 OR EQUIVALENT; HOT ROLLED MILD STEEL SECTIONS TO BS 4360 GRADE 43A OR EQUIVALENT. FINISH: SELF-COLOUR FOR PAINTING.
- 2) REMOVE ALL SHARP EDGES AND BURRS.
- 3) JOINTS AND CONSTRUCTION TO SUIT MANUFACTURERS' STANDARD PROCESSES.
- 4) DIMENSIONS AND TOLERANCES TO BS 308.
- 5) MACHINED SURFACES UNLESS STATED.
- 6) THREADS TO BS 3643 6H/6g OR BS 21 UNLESS STATED.
- 7) *
- 8) *
- 9) *

WELDING

WELDING GENERALLY TO BS 5135 CAT. C & BS 4872 PT. 1 ALL JOINTS & CONNECTIONS OF R.S. SECTIONS CONTINUOUS PLATE TO R.S. SECTION INTERMITTENT 75 WELD 100 GAP

PLATE THICKNESS	1.6; 2.5; 3; 5; 6; 8; 10	12	PLATE OVER 12
WELD SIZE	3	6	10 AS SPECIFIED

TOLERANCES

	FABRICATION	MACHINING
HOLE CENTRES	±1mm	±0.25mm
DIAMETER	±3mm	±0.25mm
ANGULAR	±1'	±0.5'
LINEAR	±3mm	±0.5mm

COPYRIGHT

THIS DOCUMENT IS THE PRIVATE & CONFIDENTIAL PROPERTY OF HODGE CLEMCO LIMITED & MUST NOT BE REPRODUCED OR DISCLOSED TO ANY THIRD PARTY WITHOUT PRIOR WRITTEN CONSENT OF THE FOREMENTIONED COMPANY.

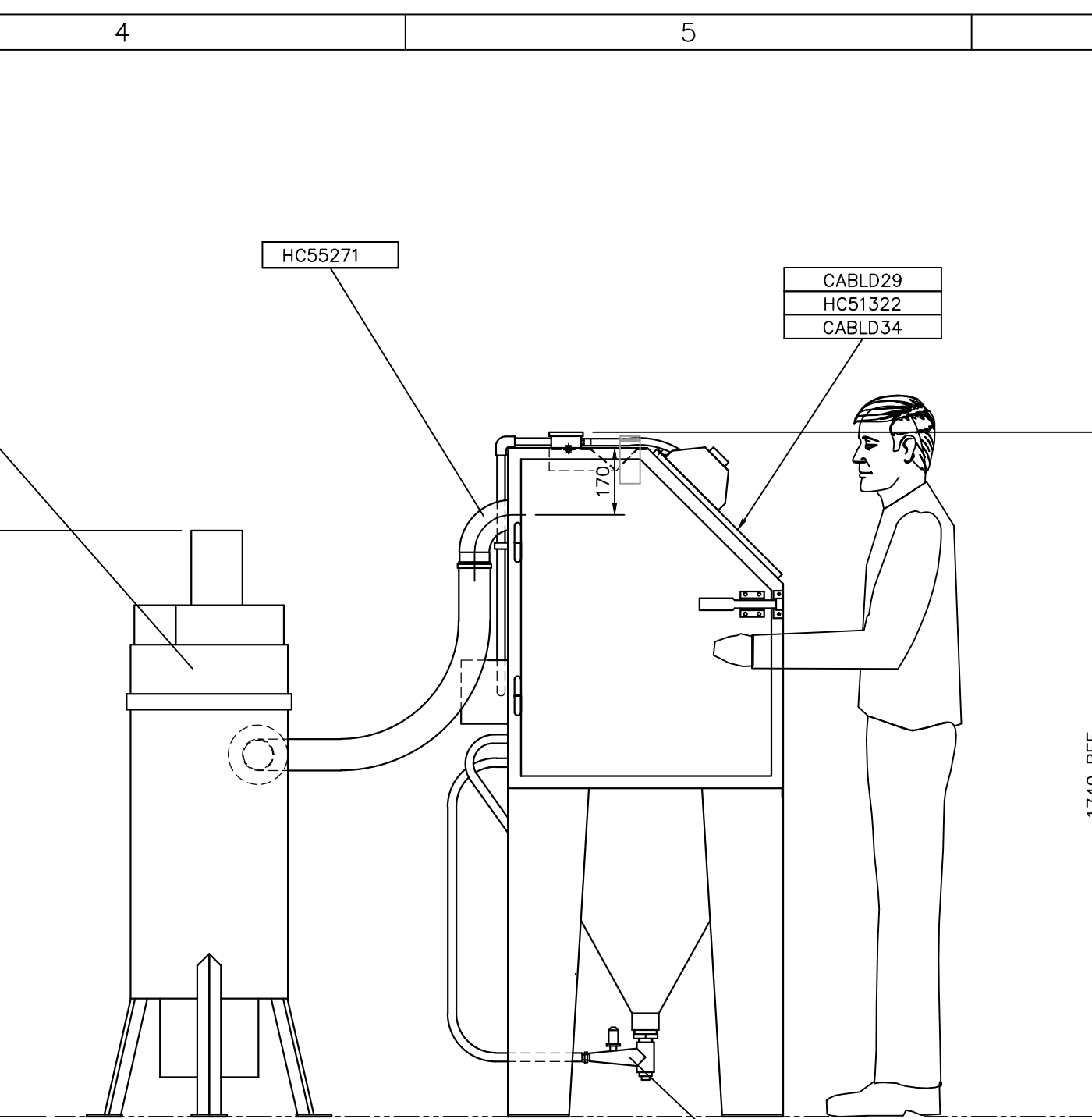


HODGE CLEMCO LIMITED,
 ORGREAVE DRIVE,
 SHEFFIELD,
 S13 9NR.
 TEL. 0114 2540600
 FAX. 0114 2540250

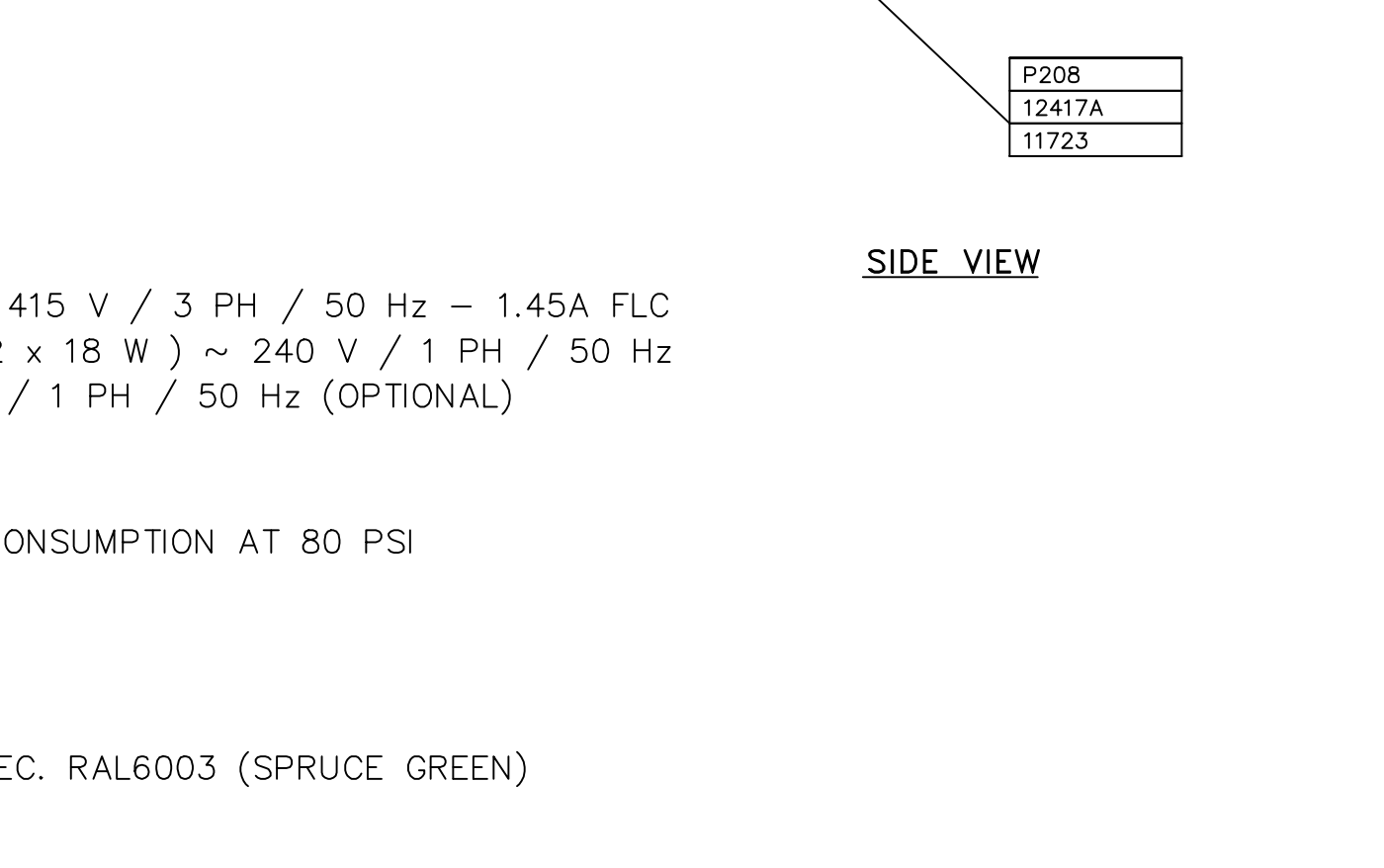
DO NOT SCALE - IF IN DOUBT ASK

TITLE G.A. IND800COMPXE SERIES
 SUCTION CABINET - ZERO D/C

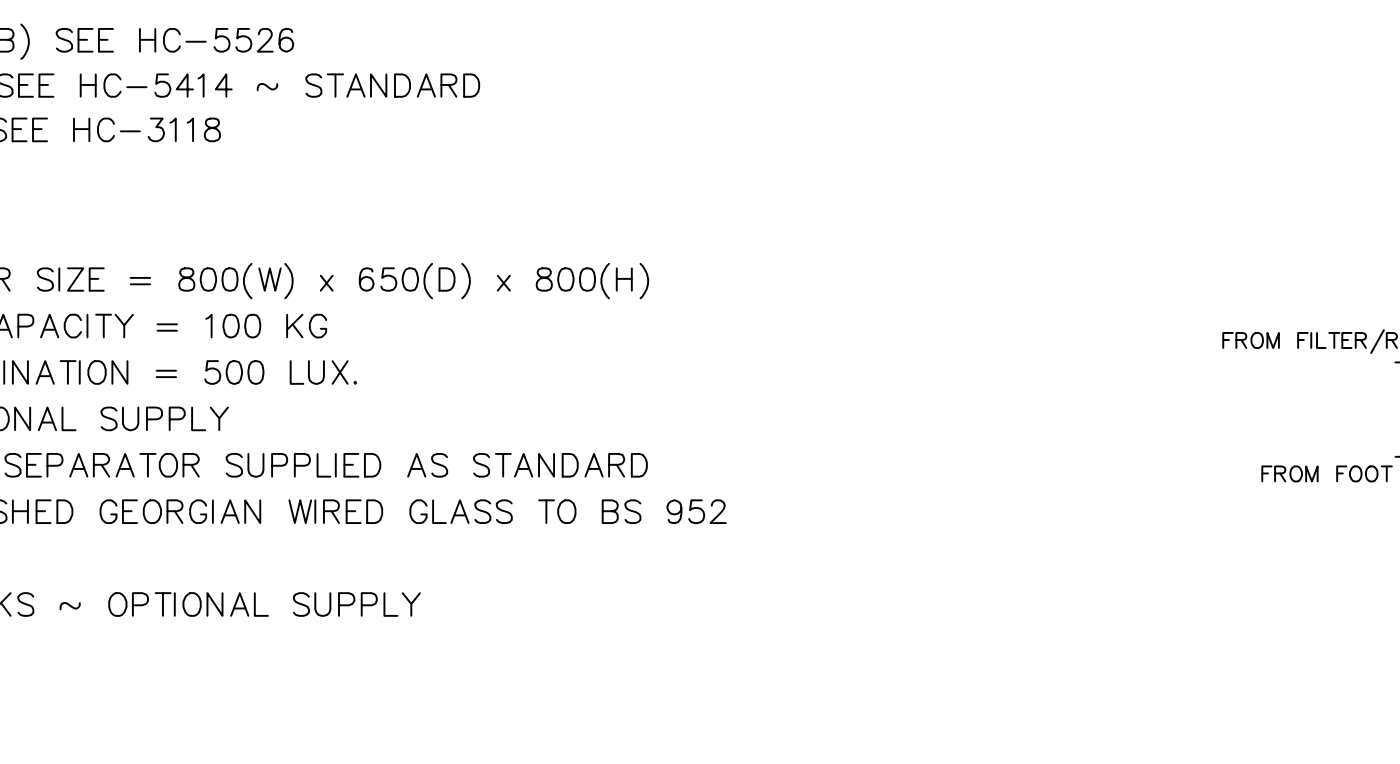
CUSTOMER STOCK



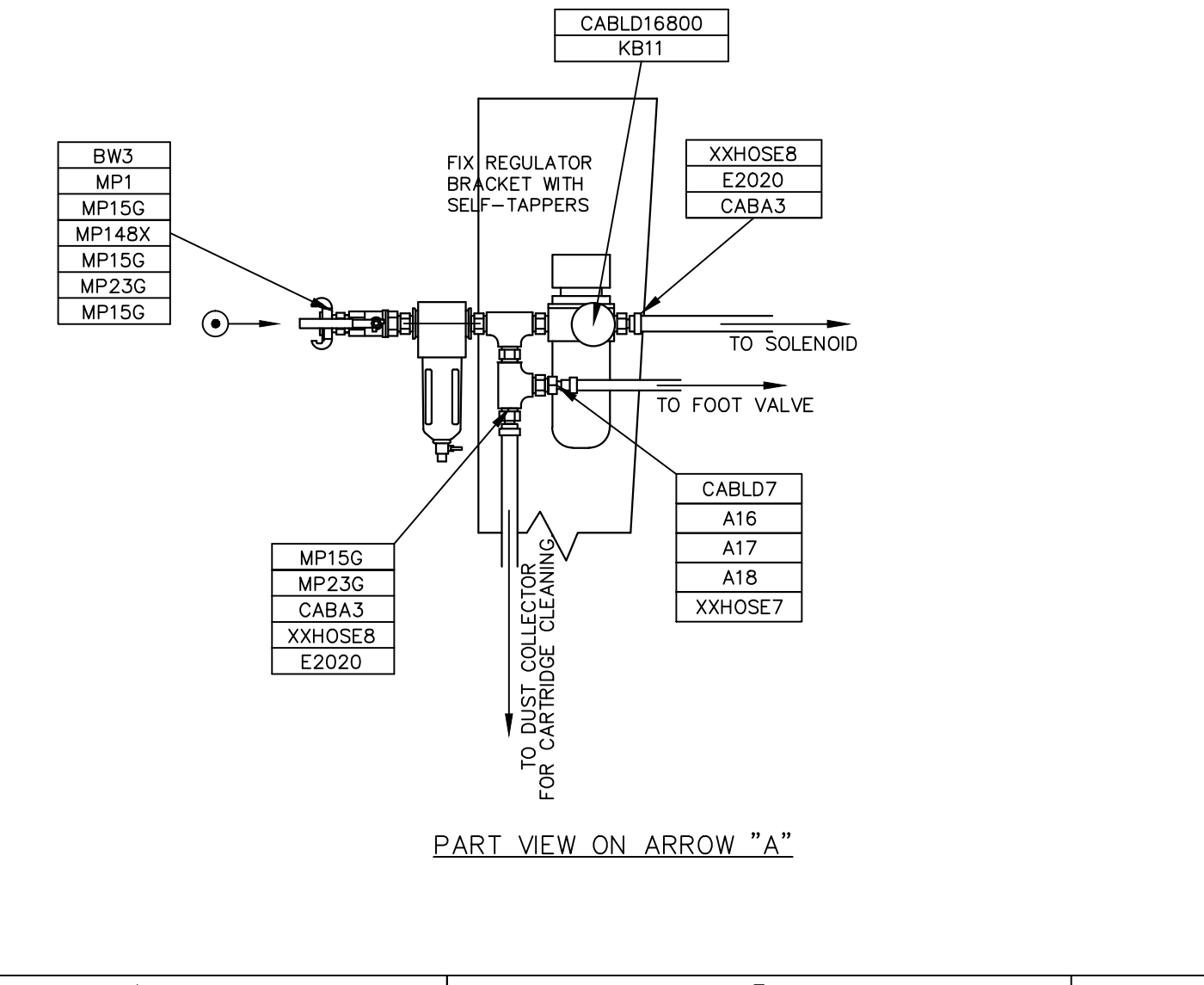
ENLARGED VIEW SHOWING HANDLE



SECTION ON ARROWS 'B-B'



SOLENOID ASSEMBLY (PART OF CAB383FGSKIT)



BLOW-OFF GUN ASSEMBLY - (OPTIONAL)

PROD. CODE	DESCRIPTION	PROD. CODE	DESCRIPTION
RM23	ADAPTOR 1/4"x1/4"	100665	DUST COLLECTOR - (0.55 KW, 300 CFM))
XXHOSE7	AIR HOSE 1/4"ID BLUE BARE	11723	ZERO-STEEL FITTING SWVEL
XXHOSE8	AIR HOSE 1/2"ID BARE	12417A	VALVE MEDIA METER ASSY *
XXIND10048	HOSE - 1/2" 1/D MATERIAL	A16	TAILPIECE 1/4"
XXMESHWW80	MESH-80 MESH/IN x 4FT WIDE	A17	O CLIP 1/2"
		A18	UNION NUT BRASS 1/4"
		BW3	COUPLING 1/2" MALE
	OPTIONAL ITEMS	CAB16	LIGHT FITTING
13116	ZERO BLOW OFF NOZZLE - 1/4"	CAB196	LATCH - A2 DRAW STYLE (YELLOW)
PE11023	NIPPLE - 3/8" x 1.4" BRASS	CAB383FGSKIT	SUCTION CABINET FOOT VALVE KIT
IND 10134	INTERLOCK SWITCH - CABINET	CAB73A	ENCLOSURE 80mm x 82mm x 85mm
IND 10151	ZERO INTERLOCK BRACKET L	CABA1	ADAPTOR - 3/8" x 1/2" HOSE
		CABA3	ADAPTOR - 1/2" x 1/2" HOSE
		CABLD29	VIEWING WINDOW - GLASS
		CABLD34A	ANTI ETCH SCREEN (5 PER SET)
		CABLD37	BLAST GATE DAMPER - 3"
		CABLD16800	FILTER/REGULATOR - 1/2"
		CABLD29F	VIEWING WINDOW - GLASS
		CHT3	CABLE TIE
		CPF0021	ELBOW - 1/4" M & F PLATED
		E2020	CLAMP - 1/2" HOSE
		HC5132	LIGHT MODULE FABRICATION
		HC5068	CABINET ARM HOLES - PLASTIC
		HC51322	WINDOW FRAME
		HC55271	SPIGOT - 3" FLANGED x 90 DEG.
		HC6623	800COMP CABINET FABRICATION
		HOSE20	HOSE - 3" FLEXIBLE RUBBER STD
		IND10123	SLEEVE/GLOVE ASSEMBLY - PAIR
		IND10134	INTERLOCK SWITCH - CABINET
		IND10151	ZERO INTERLOCK BRACKET L
		IND10159	SILENCER - 1/2"
		IND10178	MOUNTING PAD
		IND10218	DUCT COUPLER - 3" MALE
		IND10679	PUSH-BUTTON ASSEMBLY DOUBLE
		IND10823	CONDUIT - FLEXIBLE SP20
		IND10824	CONDUIT ADAPTOR STR. SP20/M20
		IND10825	CONDUIT ADAPT.STR.SWIV.SP20/M20
		IND10890	CONTROL PANEL - 0.75KW W/ISOL.
		IND10954	GROMMET - 19mm BORE
		JC3	HOSE CLIP WORM DRIVE 70 - 89
		KB11	PRESSURE GAUGE
		MP1	VALVE 1/2" BALL VALVE
		MP1411	ELBOW - 1/2" M/F
		MP148X	WATER SEP/AIR FILTER - 1/2"
		MP15	NIPPLE - 1/2" M/I
		MP23	TEE - 1/2" M/I
		P208	NIPPLE - 2" x 1" M.I.
		RCAMV4	BULKHEAD ADAPTOR - 1/4" C/W NUT
		RCAMV9	ADAPTOR - 1/4" x 1/8" BR.

4	4897	A.M.	30.08.2012
3	3887	A.M.	04.12.2002
2	3486	A.M.	11.12.2000
1	ORIGINAL	A.M.	20.04.2009
ISSUE No	MOD. No	DRAWN	CHECKED
			DATE

GENERAL NOTES
1) MATERIAL: COLD ROLLED MILD STEEL SHEET TO BS 1449 GRADE CR4 OR EQUIVALENT; HOT ROLLED MILD STEEL SECTIONS TO BS 4360 GRADE 43A OR EQUIVALENT. FINISH: SELF-COLOUR FOR PAINTING.
2) REMOVE ALL SHARP EDGES AND BURRS.
3) JOINTS AND CONSTRUCTION TO SUIT MANUFACTURERS' STANDARD PROCESSES.
4) DIMENSIONS AND TOLERANCES TO BS 308.
5) MACHINED SURFACES UNLESS STATED.
6) THREADS TO BS 3643 6H/6g OR BS 21 UNLESS STATED.
7) *
8) *
9) *

WELDING			
WELDING GENERALLY TO BS 5135 CAT. C & BS 4872 PT. 1 ALL JOINTS & CONNECTIONS OF R.S. SECTIONS CONTINUOUS PLATE TO R.S. SECTION INTERMITTENT 75 WELD 100 GAP			
PLATE THICKNESS	1.6; 2.5; 3; 5; 6; 8; 10	12	PLATE OVER 12
WELD SIZE	3	6	10 AS SPECIFIED
TOLERANCES	FABRICATION	MACHINING	
HOLE CENTRES	±1mm	±0.25mm	
DIAMETER	±3mm	±0.25mm	
ANGULAR	±1'	±0.5'	
LINEAR	±3mm	±0.5mm	

THIS DOCUMENT IS THE PRIVATE & CONFIDENTIAL PROPERTY OF HODGE CLEMCO LIMITED & MUST NOT BE REPRODUCED OR DISCLOSED TO ANY THIRD PARTY WITHOUT PRIOR WRITTEN CONSENT OF THE FOREMENTIONED COMPANY.			
		HODGE CLEMCO LIMITED, ORGREAVE DRIVE, SHEFFIELD, S13 9NR. TEL. 0114 2540600 FAX. 0114 2540250	
		DO NOT SCALE - IF IN DOUBT ASK	
TITLE G.A. IND800COMPXE SERIES SUCTION CABINET - ZERO D/C			
CUSTOMER STOCK			
DRAWN	DATE	DIMENSION	SCALE
A.M.	20.04.2009	MM	1:15
DRAWING No			SIZE
HC-6637			A1